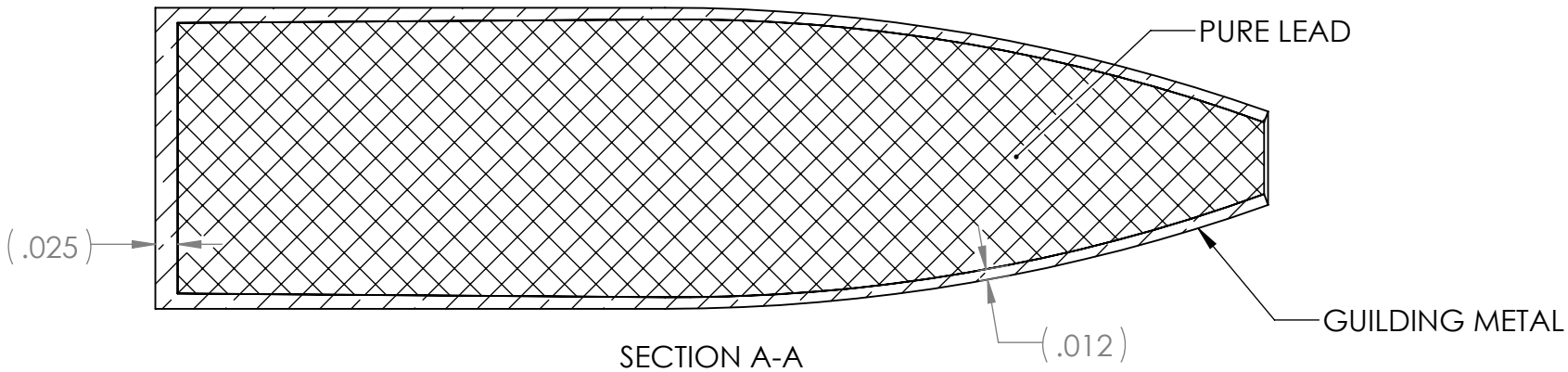
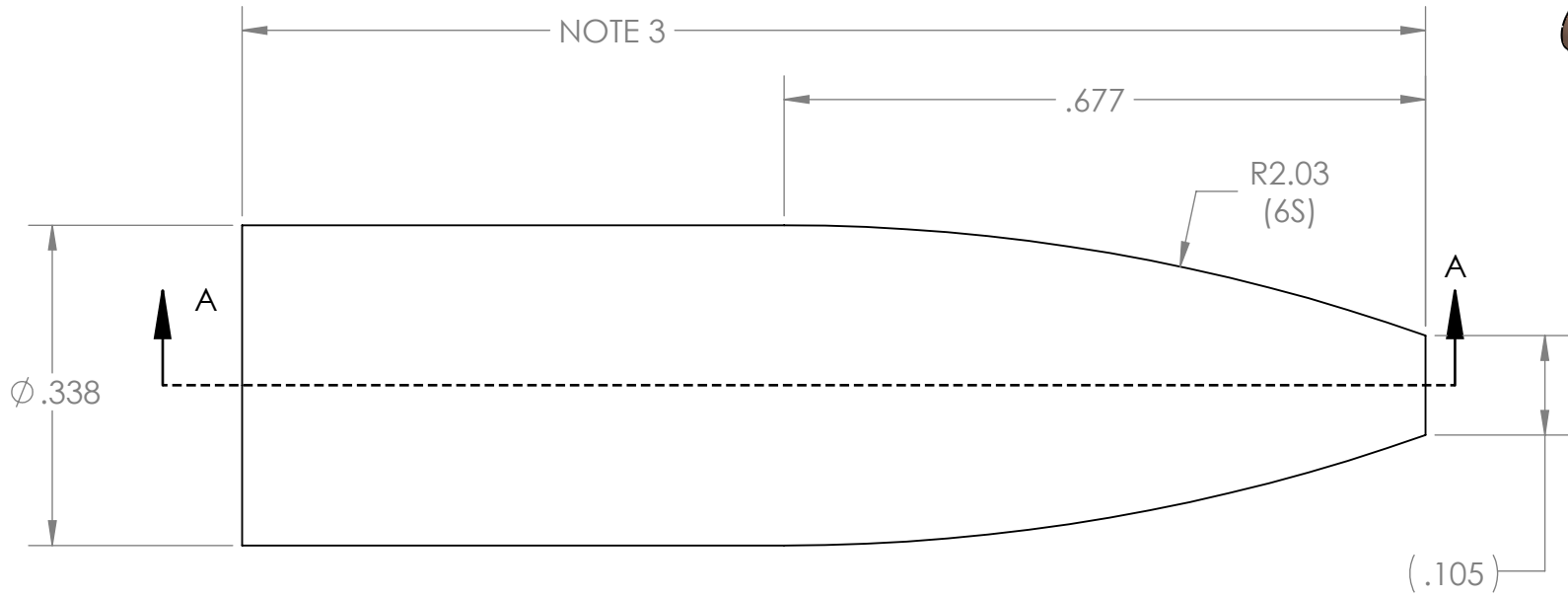
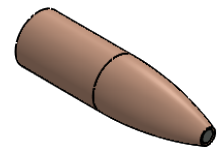


4

3

2

1



- NOTES:
- JACKET MATERIAL: GUILDING METAL
  - CORE MATERIAL: 99.9% PURE LEAD
  - OVERALL LENGTH IS DEPENDENT ON DESIRED GRAIN WEIGHT. JACKET LENGTH AND LEAD CORE WEIGHT MUST BE DISCOVERED.

**UNLESS OTHERWISE SPECIFIED:**  
 DIMENSIONS ARE IN INCHES TOLERANCES:  
 FRACTIONAL ± 1/2 DEGREE  
 ANGULAR: MACH ± 1 BEND ± 1  
 TWO PLACE DECIMAL ± .010  
 THREE PLACE DECIMAL ± .005  
 FOUR PLACE DECIMAL ± .0005  
 SURFACE FINISH =  $\sqrt{32}$  OR BETTER

**PROPRIETARY AND CONFIDENTIAL**  
 THE INFORMATION CONTAINED IN THIS DRAWING IS THE SOLE PROPERTY OF CORBIN MFG & SUPPLY, INC. ANY REPRODUCTION IN PART OR AS A WHOLE WITHOUT THE WRITTEN PERMISSION OF CORBIN MFG & SUPPLY, INC IS PROHIBITED.

|           | NAME | DATE |
|-----------|------|------|
| DRAWN     |      |      |
| CHECKED   |      |      |
| ENG APPR. |      |      |
| MFG APPR. |      |      |
| Q.A.      |      |      |

COMMENTS:

**CORBIN MFG & SUPPLY, INC.**

TITLE:  
**CORBIN .338 CALIBER FB STANDARD**

|          |                 |     |
|----------|-----------------|-----|
| SIZE     | DWG. NO.        | REV |
| <b>A</b> | FJFB-3-S-338-6S | 0   |

|            |         |              |
|------------|---------|--------------|
| SCALE: 5:1 | WEIGHT: | SHEET 1 OF 1 |
|------------|---------|--------------|

4

3

2

1

D

D

C

C

B

B

A

A