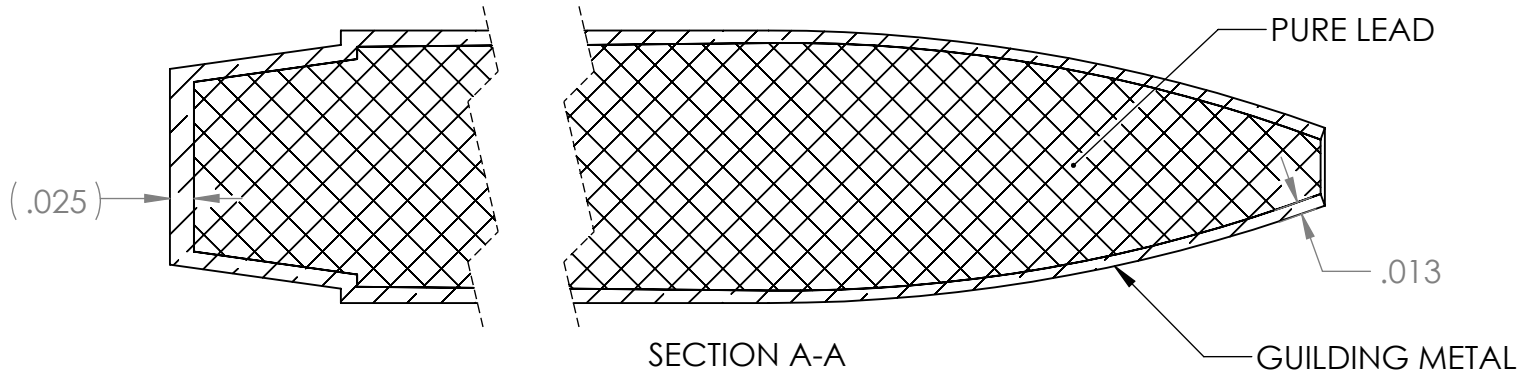
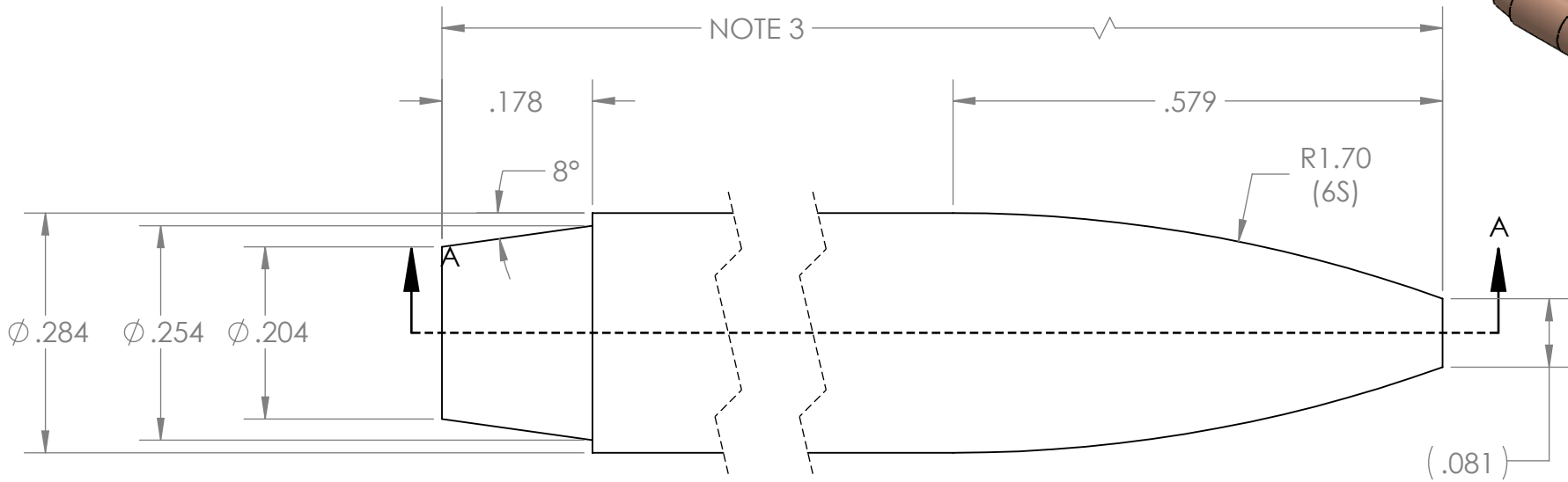
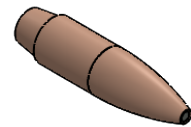


4

3

2

1



- NOTES:**
- JACKET MATERIAL: GILDING METAL
  - CORE MATERIAL: 99.9% PURE LEAD
  - OVERALL LENGTH IS DEPENDENT ON DESIRED GRAIN WEIGHT. JACKET LENGTH AND LEAD CORE WEIGHT MUST BE DISCOVERED.

**UNLESS OTHERWISE SPECIFIED:**  
 DIMENSIONS ARE IN INCHES TOLERANCES:  
 FRACTIONAL ± 1/2 DEGREE  
 ANGULAR: MACH ± 1 BEND ± 1  
 TWO PLACE DECIMAL ± .010  
 THREE PLACE DECIMAL ± .005  
 FOUR PLACE DECIMAL ± .0005  
 SURFACE FINISH =  $\sqrt{32}$  OR BETTER

**PROPRIETARY AND CONFIDENTIAL**  
 THE INFORMATION CONTAINED IN THIS DRAWING IS THE SOLE PROPERTY OF CORBIN MFG & SUPPLY, INC. ANY REPRODUCTION IN PART OR AS A WHOLE WITHOUT THE WRITTEN PERMISSION OF CORBIN MFG & SUPPLY, INC IS PROHIBITED.

	NAME	DATE
DRAWN		
CHECKED		
ENG APPR.		
MFG APPR.		
Q.A.		

COMMENTS:

**CORBIN MFG & SUPPLY, INC.**

TITLE: <b>CORBIN .284 CALIBER RB STANDARD</b>		
SIZE <b>A</b>	DWG. NO. <b>RBTO-4-S-284-6S</b>	REV <b>0</b>
SCALE: 5:1	WEIGHT:	SHEET 1 OF 1

4

3

2

1

D

D

C

C

B

B

A

A