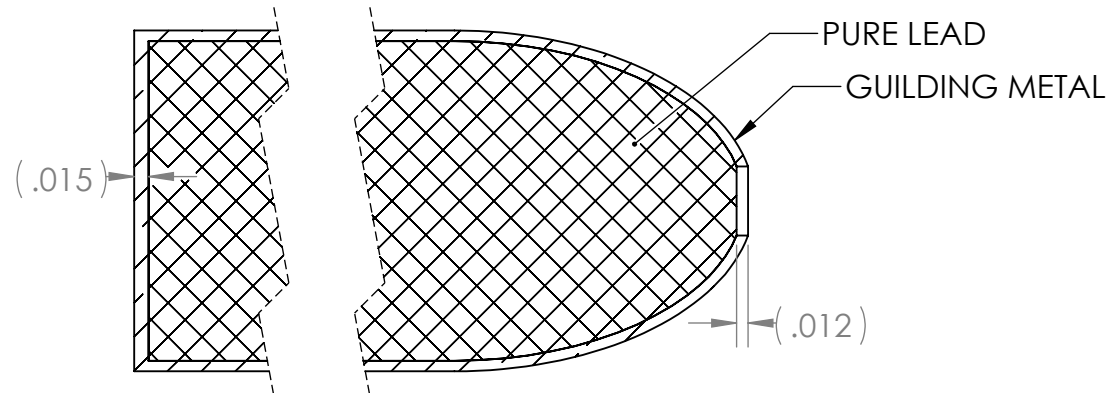
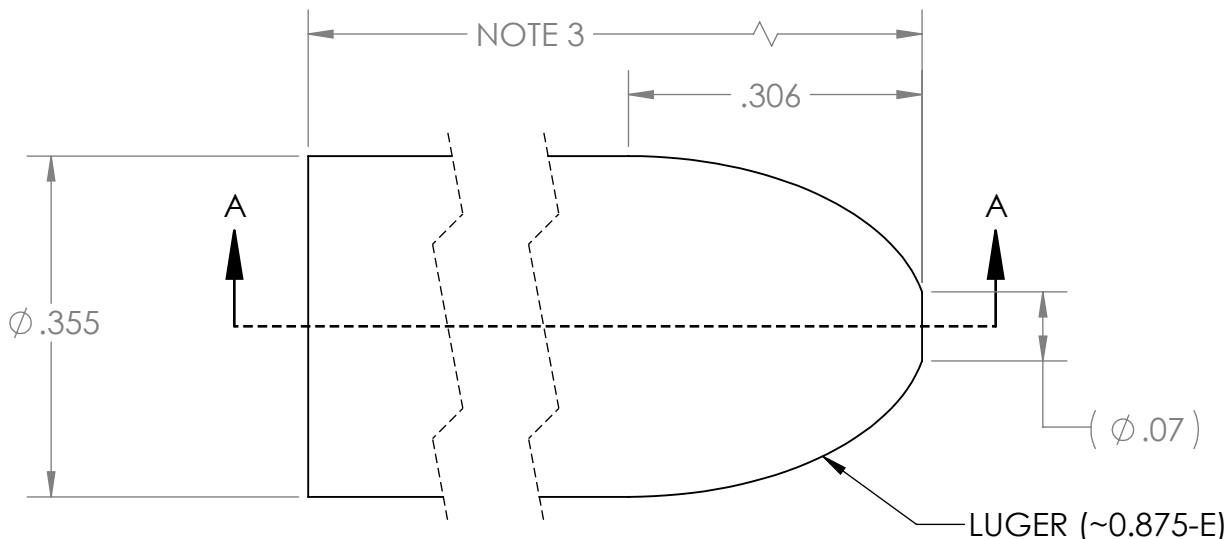
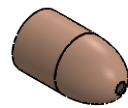


4

3

2

1



SECTION A-A

NOTES:

1. JACKET MATERIAL: GILDING METAL
2. CORE MATERIAL: 99.9% PURE LEAD
3. OVERALL LENGTH IS DEPENDENT ON DESIRED GRAIN WEIGHT. JACKET LENGTH AND LEAD CORE WEIGHT MUST BE DISCOVERED.

UNLESS OTHERWISE SPECIFIED:

DIMENSIONS ARE IN INCHES TOLERANCES:
 FRACTIONAL $\pm 1/2$ DEGREE
 ANGULAR: MACH ± 1 BEND ± 1
 TWO PLACE DECIMAL $\pm .010$
 THREE PLACE DECIMAL $\pm .005$
 FOUR PLACE DECIMAL $\pm .0005$
 SURFACE FINISH = $\sqrt{32}$ OR BETTER

PROPRIETARY AND CONFIDENTIAL

THE INFORMATION CONTAINED IN THIS DRAWING IS THE SOLE PROPERTY OF CORBIN MFG & SUPPLY, INC. ANY REPRODUCTION IN PART OR AS A WHOLE WITHOUT THE WRITTEN PERMISSION OF CORBIN MFG & SUPPLY, INC IS PROHIBITED.

	NAME	DATE
DRAWN		
CHECKED		
ENG APPR.		
MFG APPR.		
Q.A.		

COMMENTS:

CORBIN MFG & SUPPLY, INC.

TITLE: CORBIN .355 CALIBER FB LUGER STANDARD		
SIZE A	DWG. NO. FJFB-3-S-355-LUGER	REV 0
SCALE: 5:1	WEIGHT:	SHEET 1 OF 1

4

3

2

1

D

D

C

C

B

B

A

A